

KU LEUVEN

Use of linear profiling in Belgian Warmbloods



Steven Janssens
Inge Meurrens



Linear scoring of conformation, gaits, jumping ability...

- introduced in 2003
- mares of 3 and 4 years old
- at conformation and gaits contests : average 15 mares/contest
- approx. 13 – 15 locations/year, 9 evaluators
- animals only scored once



Developments in the scheme

- Initial scheme

Height at withers + 33 traits (17 type, 10 legs & feet, 6 walk& trot) + 7 extreme phenotypes

Free jumping (eg. power, technique, reflexes, willingness, canter)

- Free moving (dressage horses)

3 gaits + temperament

- Jumping under rider (traits as in free jumping)

11/02/2016

Warendorf – Interstallion working group on linear profiling in horses

3




10 % to 20% of the mares born

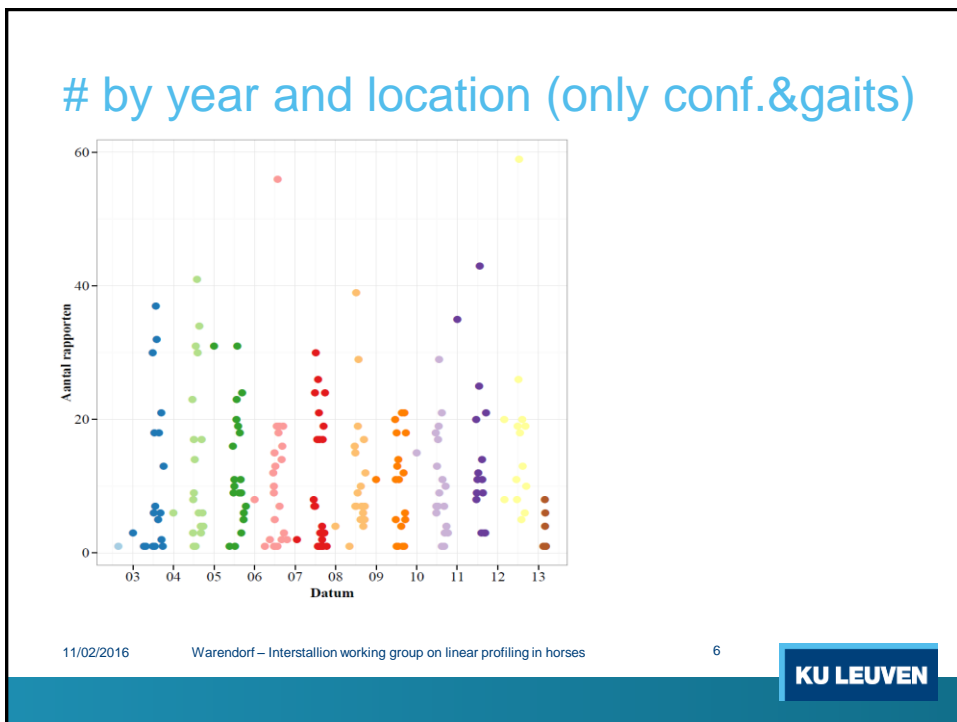
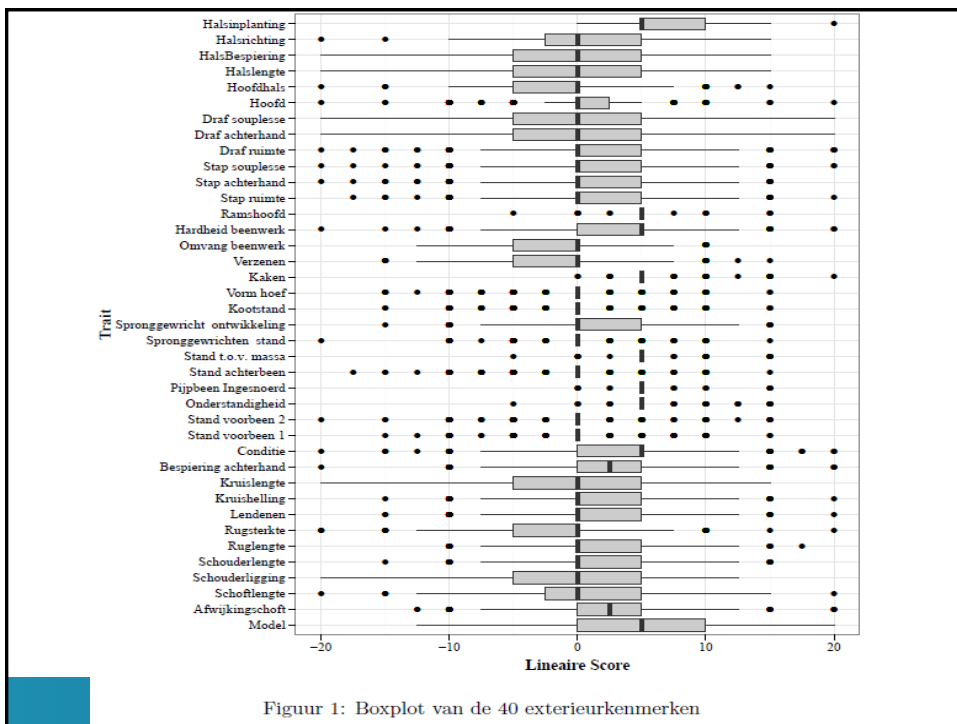
Jaar	Conformation gaits (in hand)	Free jumping	Gaits (free)	Jumping under rider
2003	201	69		
2004	273	51		
2005	277	94		
2006	151	72		
2007	237	105		
2008	224	81		
2009	196	187		
2010	206	182		
2011	196	206		
2012	234	??		
2013	212	147	15	
2014	191	192	31	445
2015	131	115	7	341

11/02/2016

Warendorf – Interstallion working group on linear profiling in horses

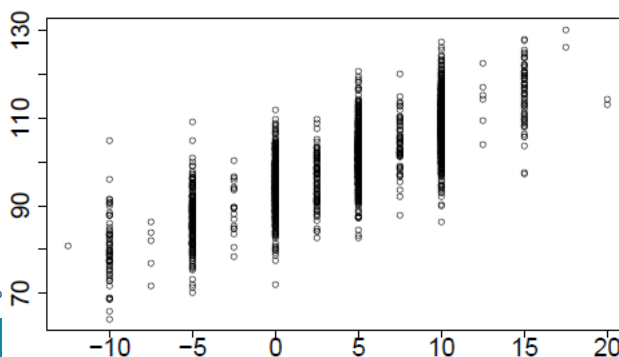
4





Computation of bv's (first 2014)

- In “blocks” of traits (computational issues)
- Evaluator missing early years (loss of data)
- Model=age (categories of months), date/location, evaluator
- Relative ebv's
average =100, genetic standarddeviation = 20



11/02/2016 Warendorf – Interstallo

Published on
BWP website

for stallions

> 5 offspring

11/02/2016 Warendorf – Interstallo

- Home
- Stallions
- News
- Calendar
- BWP-Results
- Foal centre
- BWP Shop
- BWP Online
- FAQ
- Association
- Regulations
- Sites Regions
- Links
- Sponsors
- For sale
- Contact

Our studbooks

- Belgian Warmblood
- Belgische Rijpony
- Connemara Pony
- DpB Dartmoor Pony
- Tulpaarden

CLINTON Z10236093
 HOL • studboek nr: 1653
 Life nr: 999-999-1000155995
 grey • 170 cm • '25/02/1993
 ambassadeur

Inspected on:23/03/1996

Stud farm
 Team Nijhof
 Kalsdonk 9-1, 7274 AG Geesteren, The Netherlands
 W: <http://www.team-nijhof.nl/> • E: info@team-nijhof.com
 T: 0031545481259

Pedigree	Keuringsrapport	Index exterieurkenmerken	Index springkenmerken
Offspring: 28			
Omschrijving			
Stokmaat (klein < 100 > groot)			109,22 0.82
Model (vierkant < 100 > rechthoek)		98,36	0.78
Conditie (weinig < 100 > veel)	89,97		0.83
Hoofd (klein < 100 > groot)		96,12	0.78
Hoofd-halsverbinding (licht < 100 > zwaar)			101,91
Halslengte (kort < 100 > lang)			110,03
Halsbespiering (weinig < 100 > veel)			101,08
Halsrichting (verticaal < 100 > horizontaal)			118,12 0.70
Afvijkingschoft (plat < 100 > hoog)			117,73 0.82
Schoftlengte (kort < 100 > lang)	81,94		0.71
Schouderligging (recht < 100 > schuin)			100,14 0.64
Schouderlengte (kort < 100 > lang)	93,83		0.74
Ruglengte (kort < 100 > lang)		97,28	0.81
Verloop rug (diep < 100 > strak)	93,77		0.84

Developments...

- Analysis of data measured under the rider
- Combine with ebv's for jumping based on competition data
- Hardware for collection of data

11/02/2016

Warendorf – Interstallion working group on linear profiling in horses

9

KU LEUVEN

Belgian Warmblood BWP

Waversebaan 99 – 3050 Oud-Heverlee (Belgium)

T.: +32 16/479.980 – F: +32 16/479.985

– info@bwp.be



www.livestockgenetics.be
livestockgenetics@kuleuven.be

Tel: +32 (0)16 32 85 96

Fax: +32 (0)16 32 19 94

KU LEUVEN



Paper recording, now 9 point scale

Naam	17/05/1996	
Levensnummer		
Datum	21/07/2005	
Jury	739668 S ONBEKENDE PERSOON - WAVERSEBAAN - 3050 OUD-HEVERLEE -Belgi	
Plaats	GEEL	
Model	Lendene	Hardheid beenwerk
Conditie	Kruishelling	Stapruimte
Hoofd	Kruislengte	Stap achterhand
Hoofd hals	Bespieling achterhand	Stap souplesse
Halslengte	Stand voorbeen(1)	Drafruimte
Halsbespieling	Stand voorbeen(2)	Drafachterhand
Halsrichting	Standachterbeen	Drafsouplesse
AfwijkingSchoft	Spronggewrichtenstand	Ramshoofd
Schoftlengte	Spronggewrichtenontwikkeling	Kaken
Schouderligging	Kootstand	Halsinplanting
Schouderlengte	Vormhoef	Onderstandigheid
Ruglengte	Verzenen	Pijpbeen ingesnoerd
Rugsterkte	Omvang beenwerk	Standtovmassa

KU LEUVEN